

Line L13300

NOTE:  
AdTau outcomes used in this MultiPlot were calculated from the Z dB/dt data using 0.002 pV/Am<sup>4</sup> as the cutoff.

EM Z Component Channel Times (µs)	
1	120
2	141
3	167
4	198
5	234
6	281
7	339
8	406
9	484
10	573
11	682
12	818
13	974
14	1151
15	1370
16	1641
17	1953
18	2307
19	2745
20	3286
21	3911
22	4620
23	5495
24	6578
25	7828



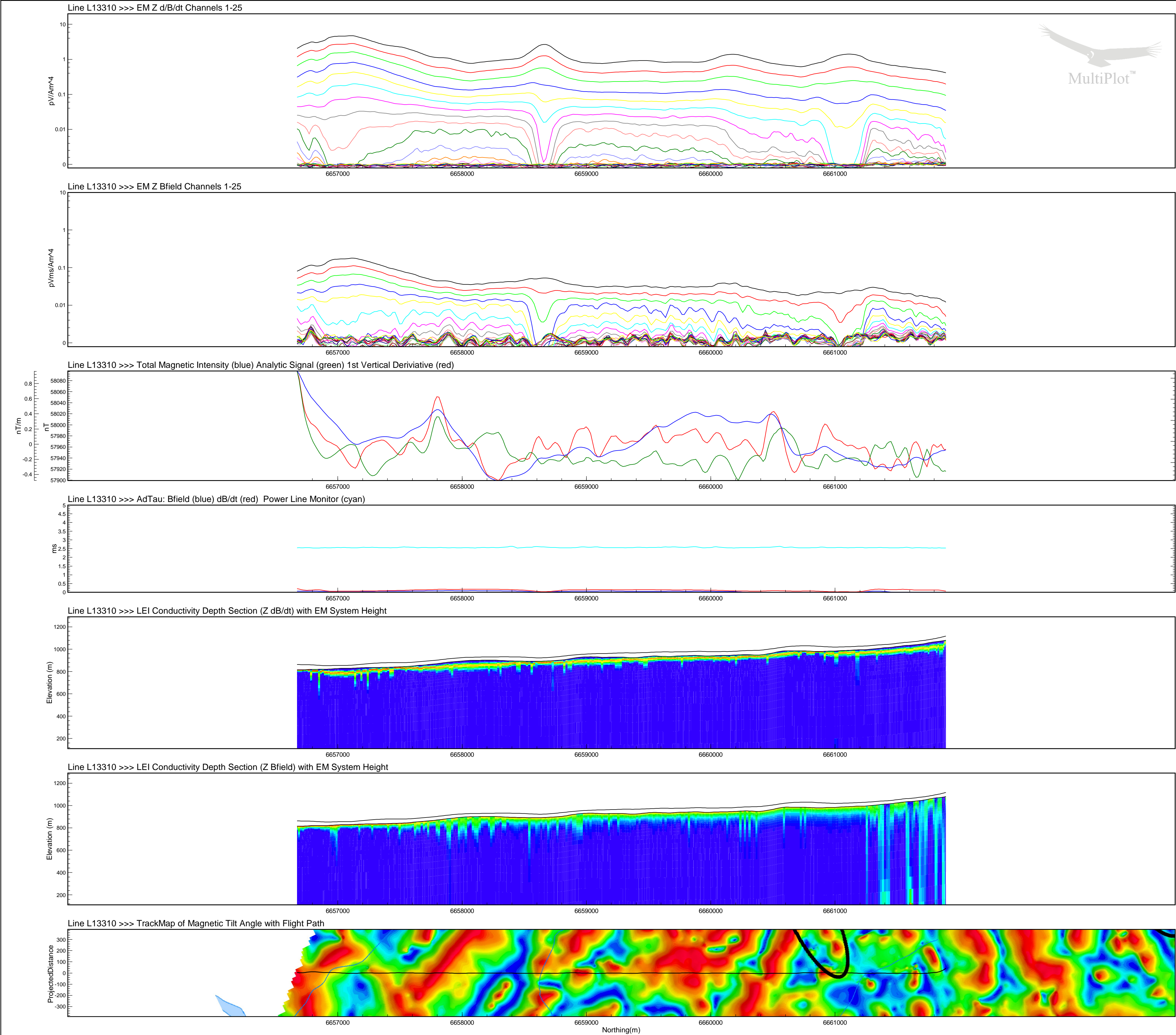
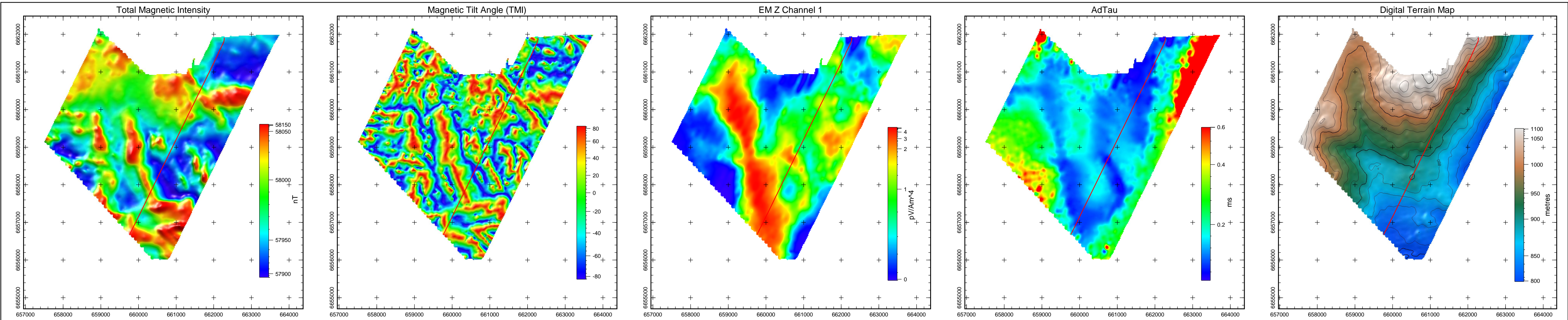
Tarsis Capital Corp  
MOR Extension  
Yukon  
VTEM 30 Hz Survey

Flown: May - August 2008  
Processed: January 2009



Condor Consulting Inc.  
Lakewood, Colorado





## Line L13310

NOTE:  
AdTau outcomes used in this MultiPlot were calculated from the Z dB/dt data using 0.002 pV/Am<sup>4</sup> as the cutoff.

EM Z Component Channel Times (µs)	
1	120
2	141
3	167
4	198
5	234
6	281
7	339
8	406
9	484
10	573
11	682
12	818
13	974
14	1151
15	1370
16	1641
17	1953
18	2307
19	2745
20	3286
21	3911
22	4620
23	5495
24	6578
25	7828

Scale 1 : 20000

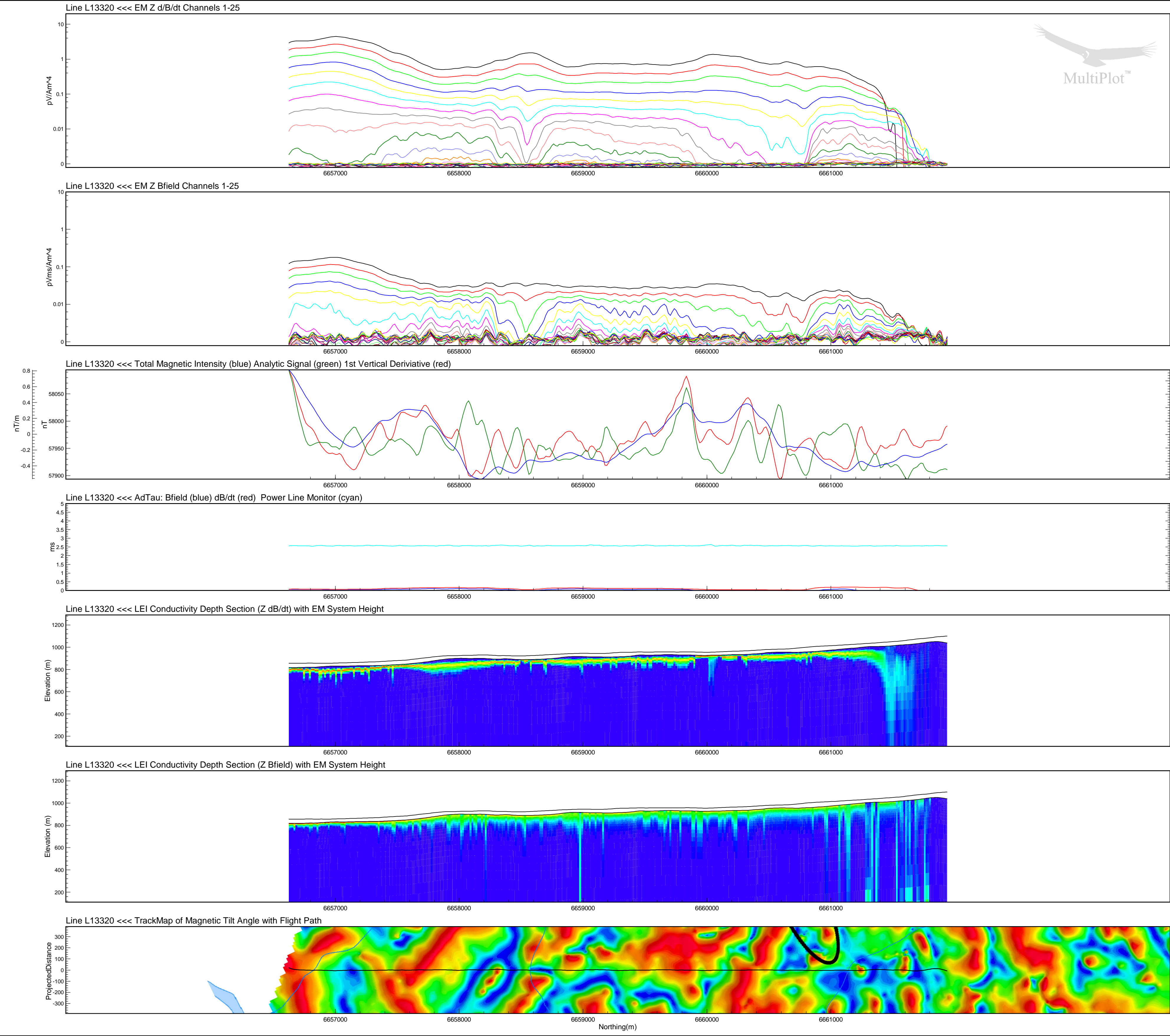
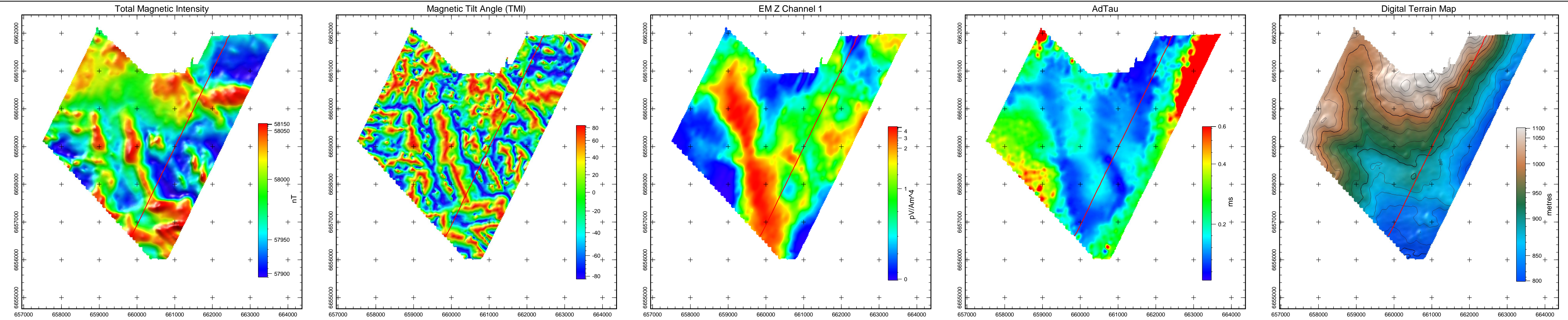
0m 400m 800m 1200m

WGS84 UTM8N

Tarsis Capital Corp  
MOR Extension  
Yukon  
VTEM 30 Hz Survey

Flown: May - August 2008  
Processed: January 2009





## Line L13320

NOTE:  
AdTau outcomes used in this MultiPlot were calculated from the Z dB/dt data using 0.002 pV/Am<sup>4</sup> as the cutoff.

EM Z Component Channel Times (µs)	
1	120
2	141
3	167
4	198
5	234
6	281
7	339
8	406
9	484
10	573
11	682
12	818
13	974
14	1151
15	1370
16	1641
17	1953
18	2307
19	2745
20	3286
21	3911
22	4620
23	5495
24	6578
25	7828

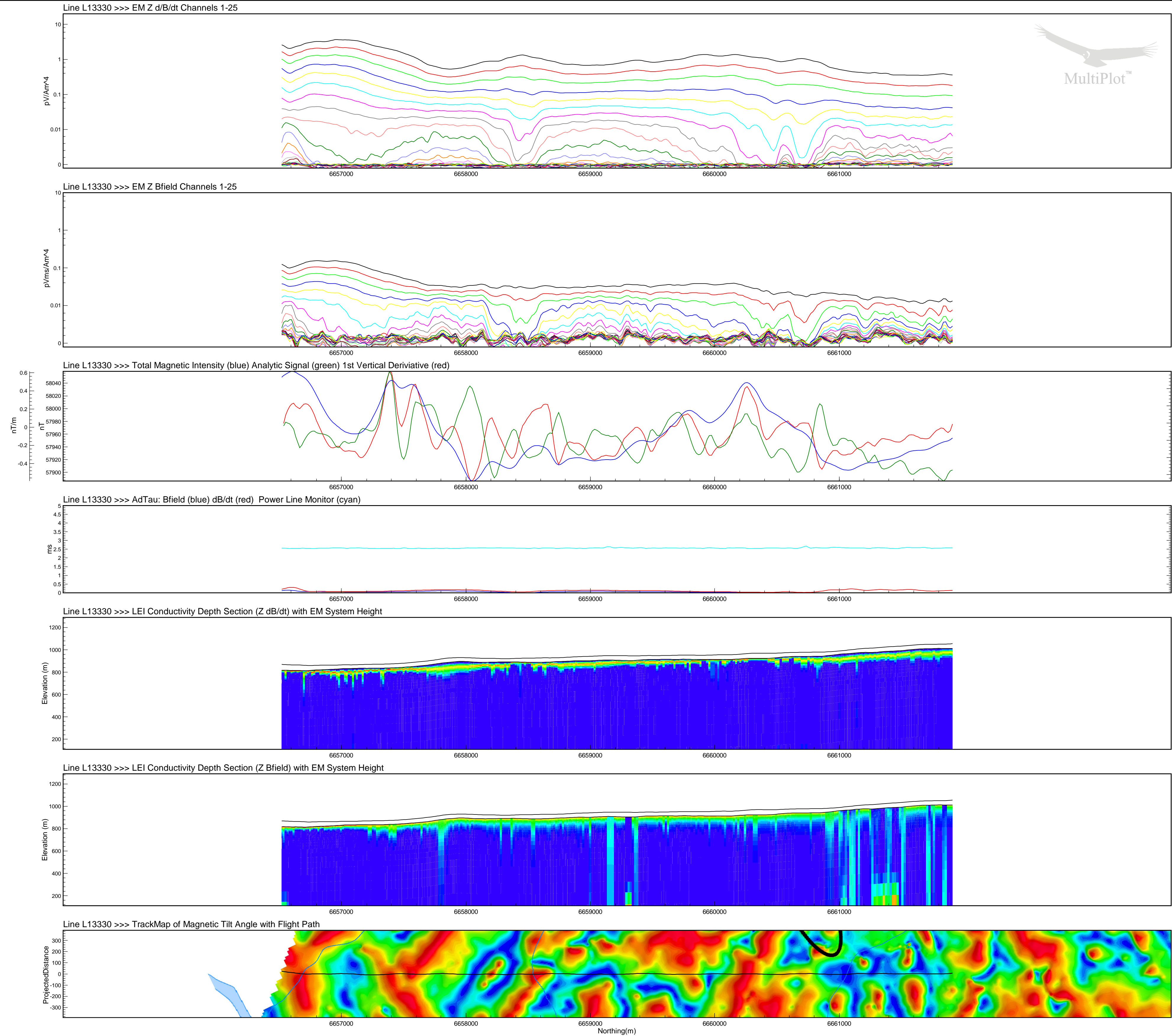
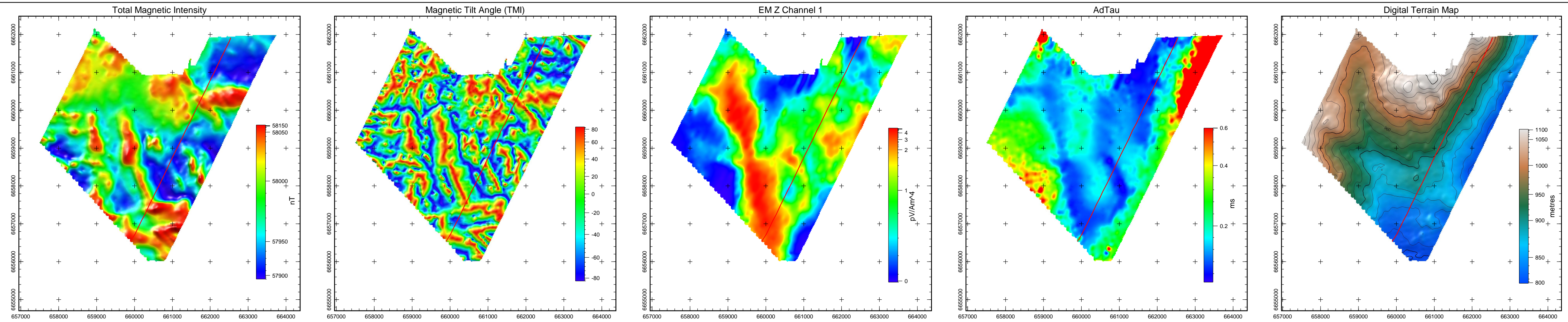


Tarsis Capital Corp  
MOR Extension  
Yukon  
VTEM 30 Hz Survey

Flown: May - August 2008  
Processed: January 2009







## Line L13330

NOTE:  
AdTau outcomes used in this MultiPlot were calculated  
from the Z dB/dt data using 0.002 pV/Am<sup>4</sup> as the cutoff.

EM Z Component Channel Times (µs)	
1	120
2	141
3	167
4	198
5	234
6	281
7	339
8	406
9	484
10	573
11	682
12	818
13	974
14	1151
15	1370
16	1641
17	1953
18	2307
19	2745
20	3286
21	3911
22	4620
23	5495
24	6578
25	7828

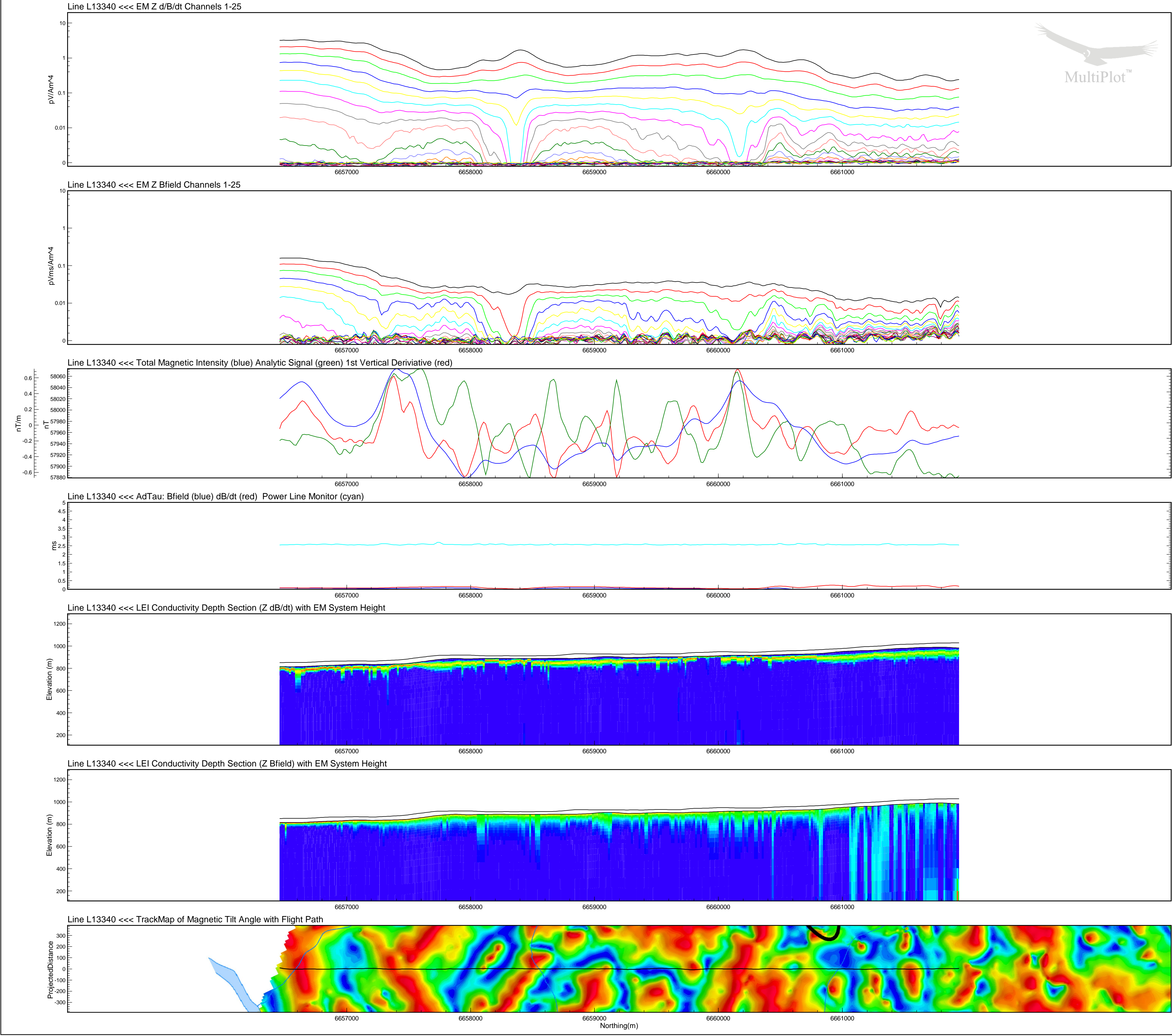
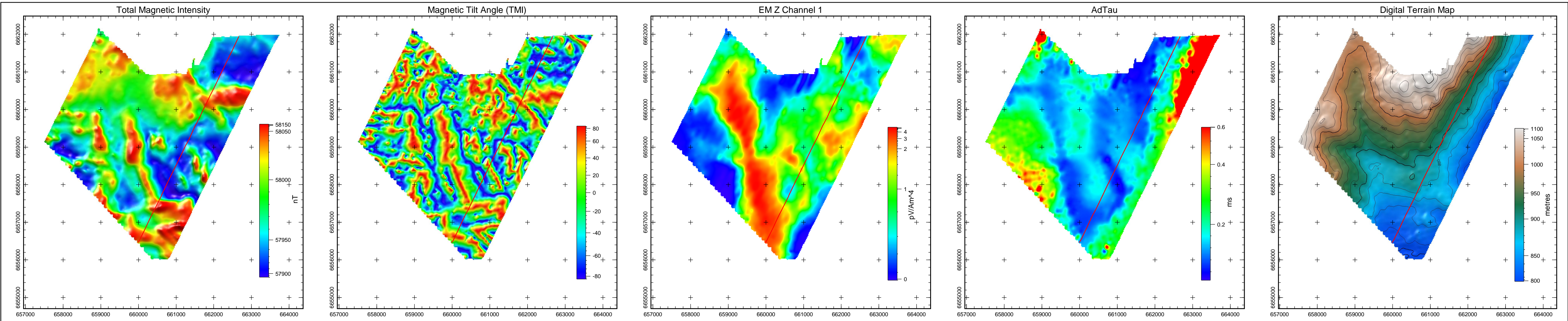


Tarsis Capital Corp  
MOR Extension  
Yukon  
VTEM 30 Hz Survey

Flown: May - August 2008  
Processed: January 2009







Line L13340

NOTE:  
AdTau outcomes used in this MultiPlot were calculated from the Z dB/dt data using 0.002 pV/Am<sup>4</sup> as the cutoff.

EM Z Component Channel Times (µs)	
1	120
2	141
3	167
4	198
5	234
6	281
7	339
8	406
9	484
10	573
11	682
12	818
13	974
14	1151
15	1370
16	1641
17	1953
18	2307
19	2745
20	3286
21	3911
22	4620
23	5495
24	6578
25	7828



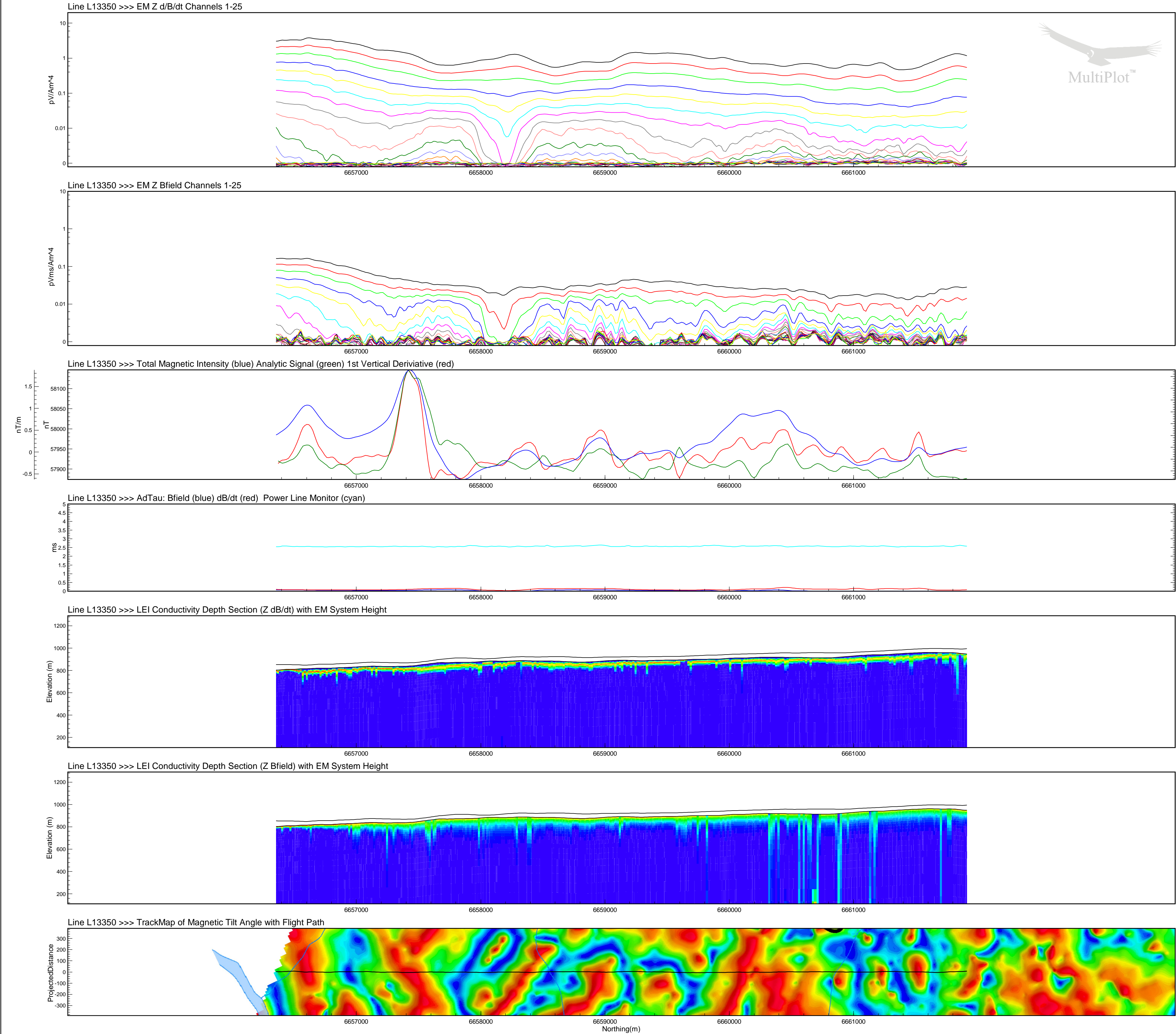
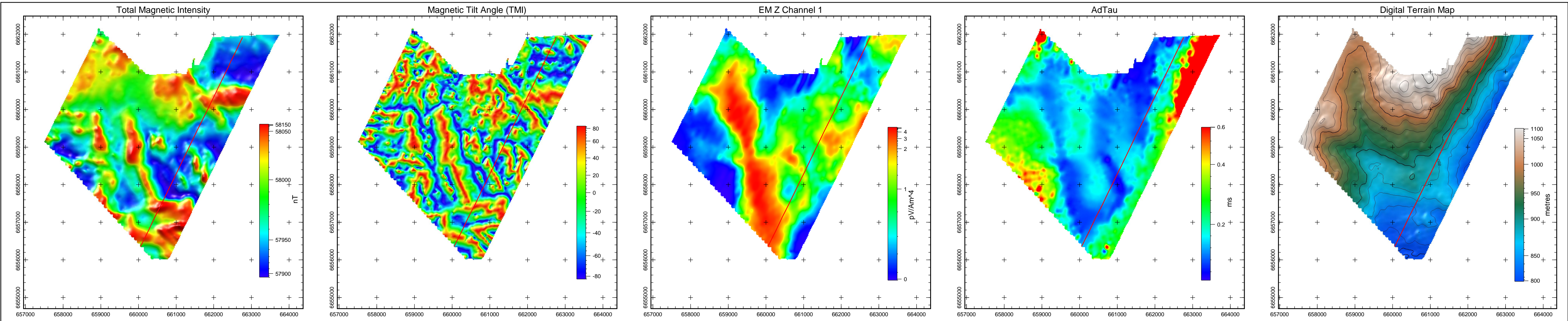
Tarsis Capital Corp  
MOR Extension  
Yukon  
VTEM 30 Hz Survey

Flown: May - August 2008  
Processed: January 2009



Condor Consulting Inc.  
Lakewood, Colorado





Line L13350

NOTE:  
AdTau outcomes used in this MultiPlot were calculated from the Z dB/dt data using 0.002 pV/Am<sup>4</sup> as the cutoff.

EM Z Component Channel Times (µs)	
1	120
2	141
3	167
4	198
5	234
6	281
7	339
8	406
9	484
10	573
11	682
12	818
13	974
14	1151
15	1370
16	1641
17	1953
18	2307
19	2745
20	3286
21	3911
22	4620
23	5495
24	6578
25	7828



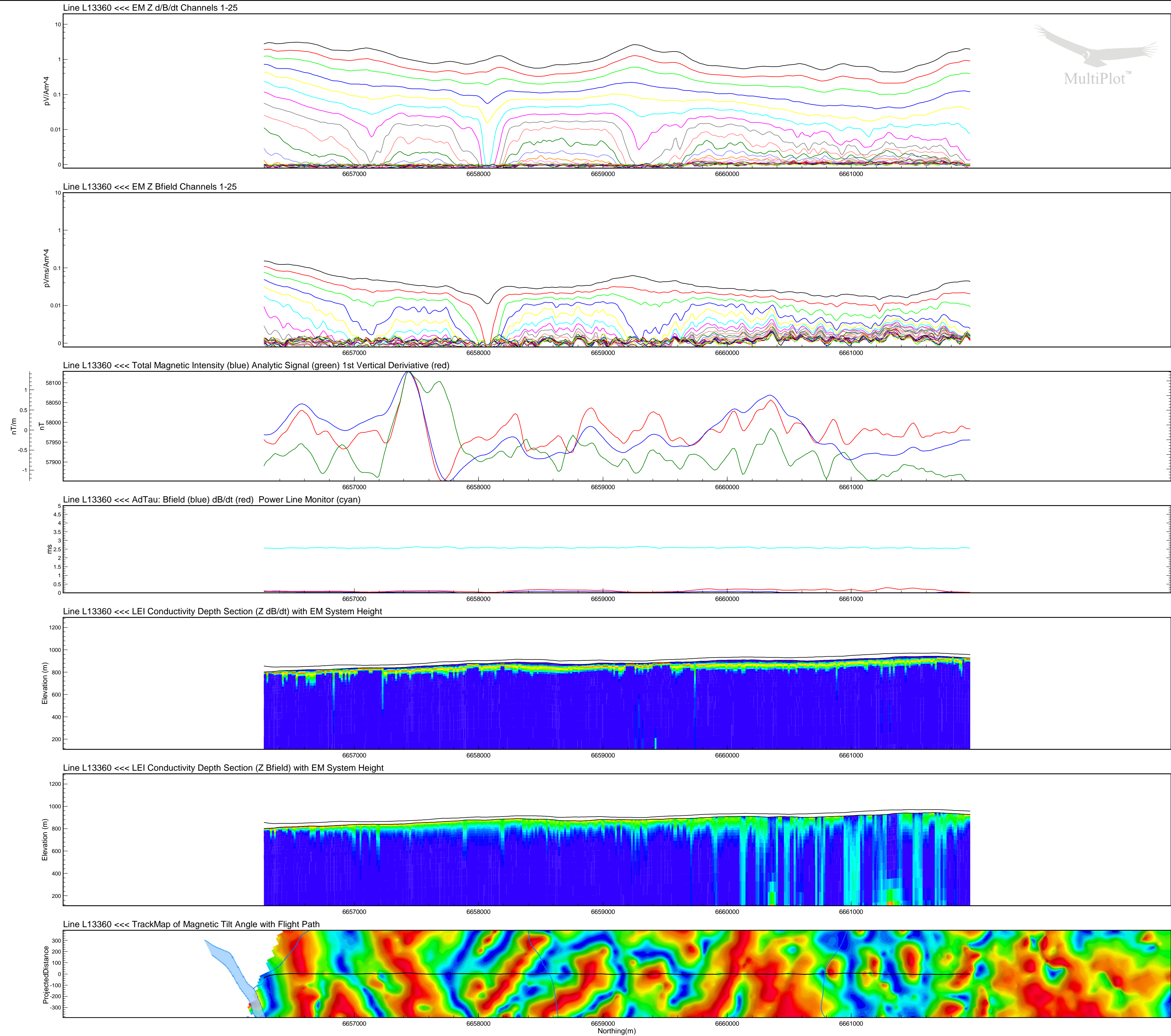
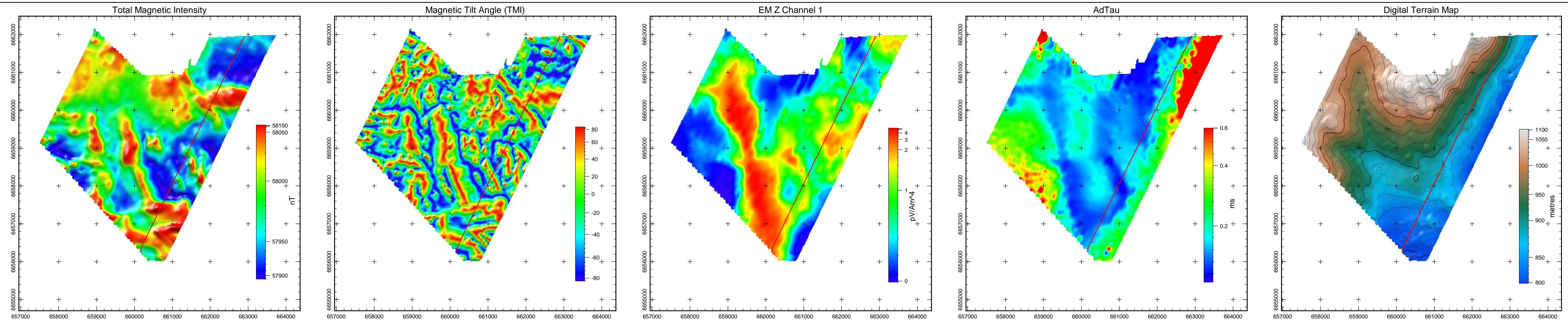
Tarsis Capital Corp  
MOR Extension  
Yukon  
VTEM 30 Hz Survey

Flown: May - August 2008  
Processed: January 2009



Condor Consulting Inc.  
Lakewood, Colorado





## Line L13360

NOTE:  
AdTau outcomes used in this MultiPlot were calculated from the Z dB/dt data using 0.002 pV/Am<sup>4</sup> as the cutoff.

EM Z Component Channel Times (µs)	
1	120
2	141
3	167
4	198
5	234
6	281
7	339
8	406
9	484
10	573
11	682
12	818
13	974
14	1151
15	1370
16	1641
17	1953
18	2307
19	2745
20	3286
21	3911
22	4620
23	5495
24	6578
25	7828

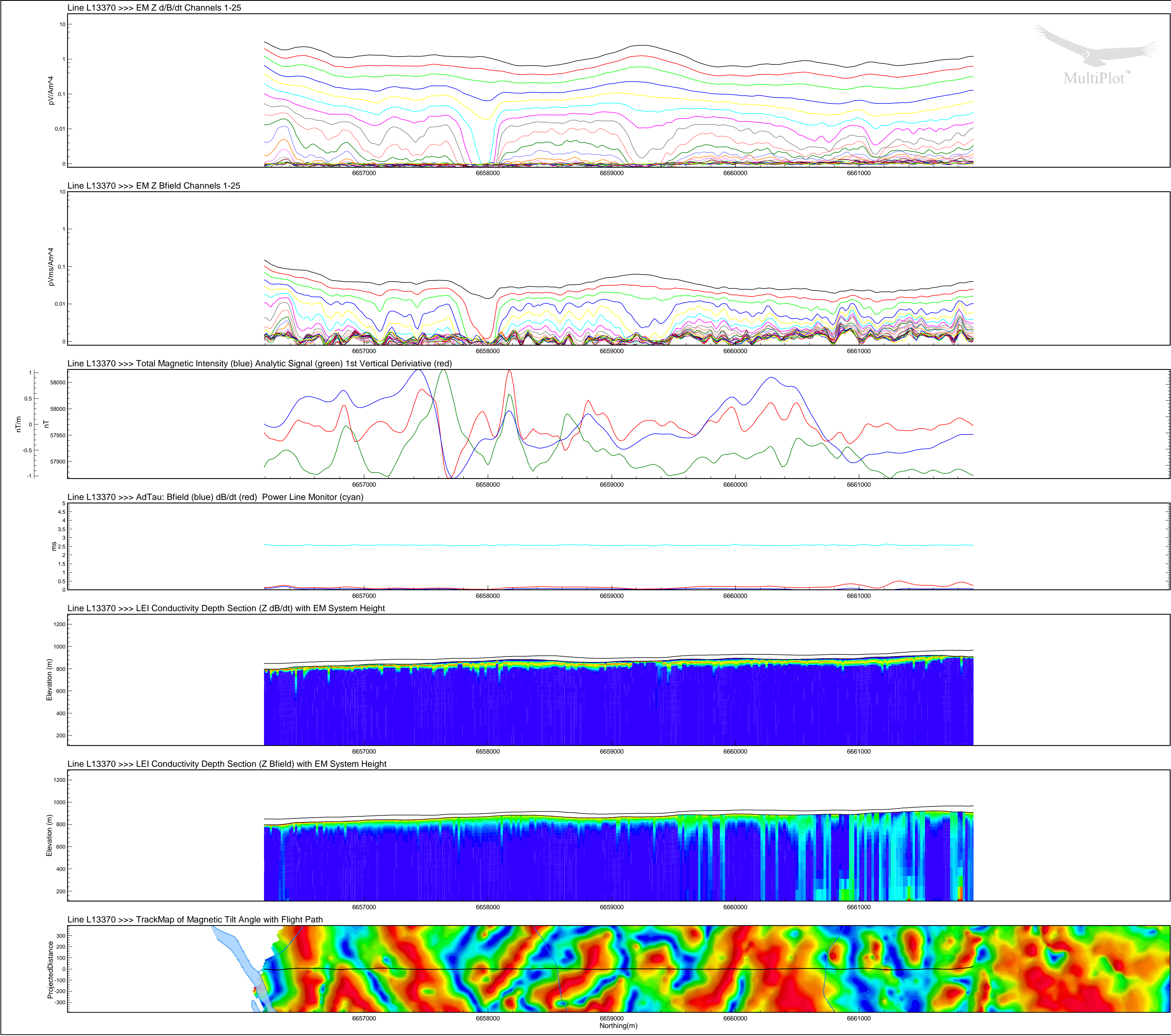
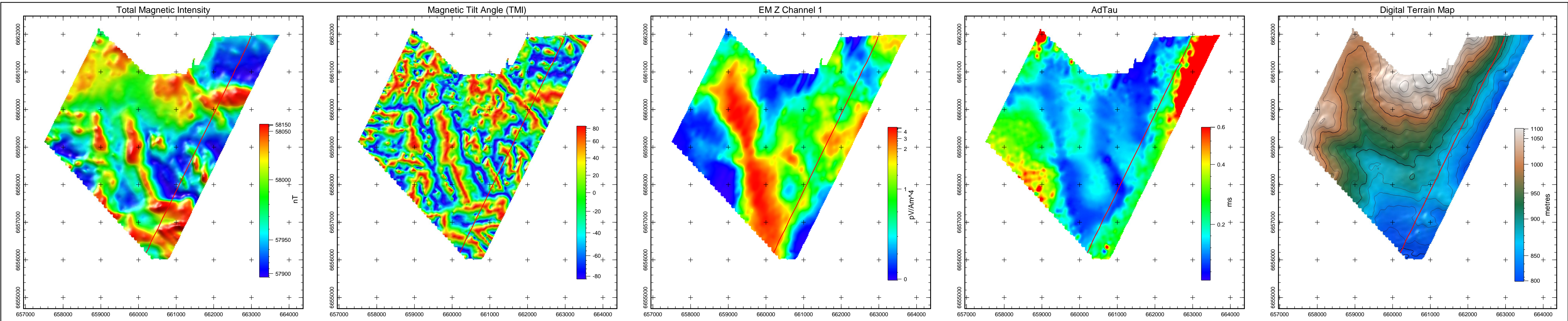


Tarsis Capital Corp  
MOR Extension  
Yukon  
VTEM 30 Hz Survey

Flown: May - August 2008  
Processed: January 2009







## Line L13370

NOTE:  
AdTau outcomes used in this MultiPlot were calculated from the Z dB/dt data using 0.002 pV/Am<sup>4</sup> as the cutoff.

EM Z Component Channel Times (µs)	
1	120
2	141
3	167
4	198
5	234
6	281
7	339
8	406
9	484
10	573
11	682
12	818
13	974
14	1151
15	1370
16	1641
17	1953
18	2307
19	2745
20	3286
21	3911
22	4620
23	5495
24	6578
25	7828



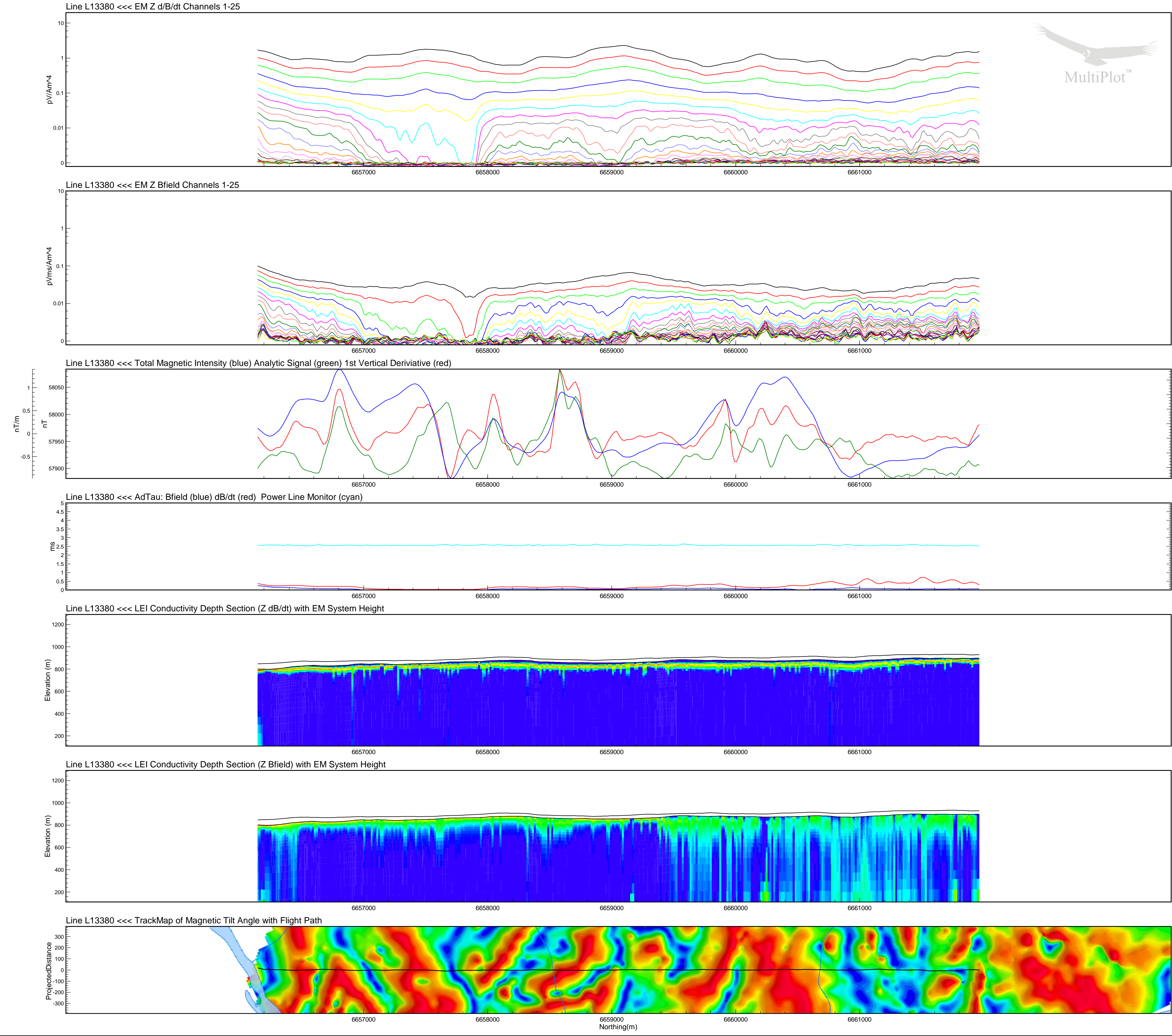
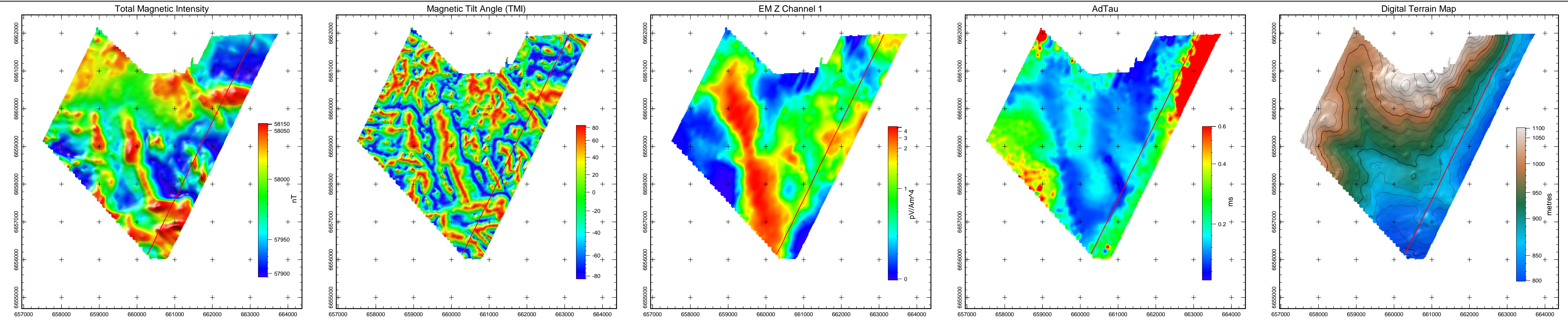
Tarsis Capital Corp  
MOR Extension  
Yukon  
VTEM 30 Hz Survey

Flown: May - August 2008  
Processed: January 2009



Condor Consulting Inc.  
Lakewood, Colorado





Line L13380

NOTE:  
AdTau outcomes used in this MultiPlot were calculated from the Z dB/dt data using 0.002 pV/Am<sup>4</sup> as the cutoff.

EM Z Component Channel Times (µs)	
1	120
2	141
3	167
4	198
5	234
6	281
7	339
8	406
9	484
10	573
11	682
12	818
13	974
14	1151
15	1370
16	1641
17	1953
18	2307
19	2745
20	3286
21	3911
22	4620
23	5495
24	6578
25	7828



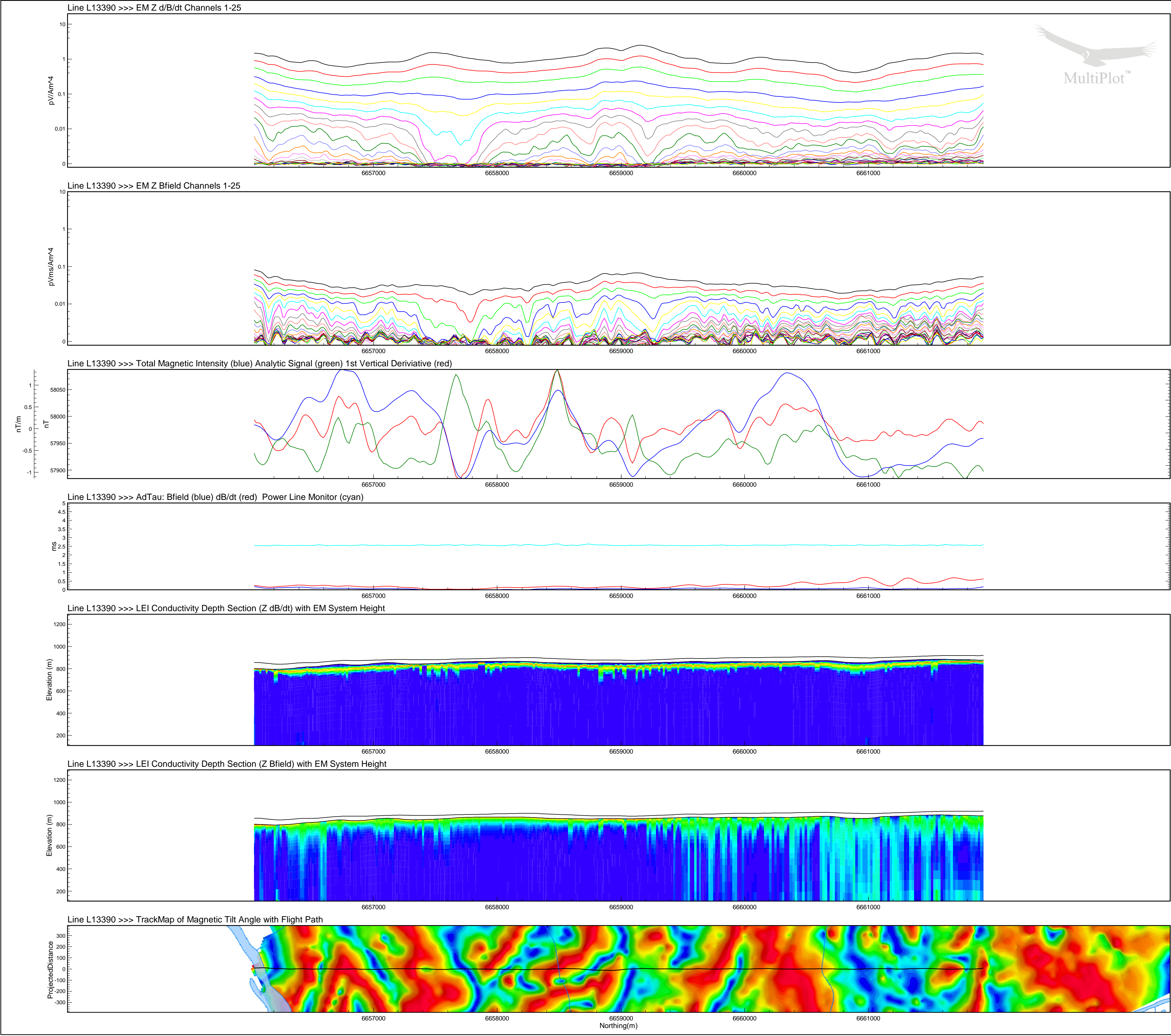
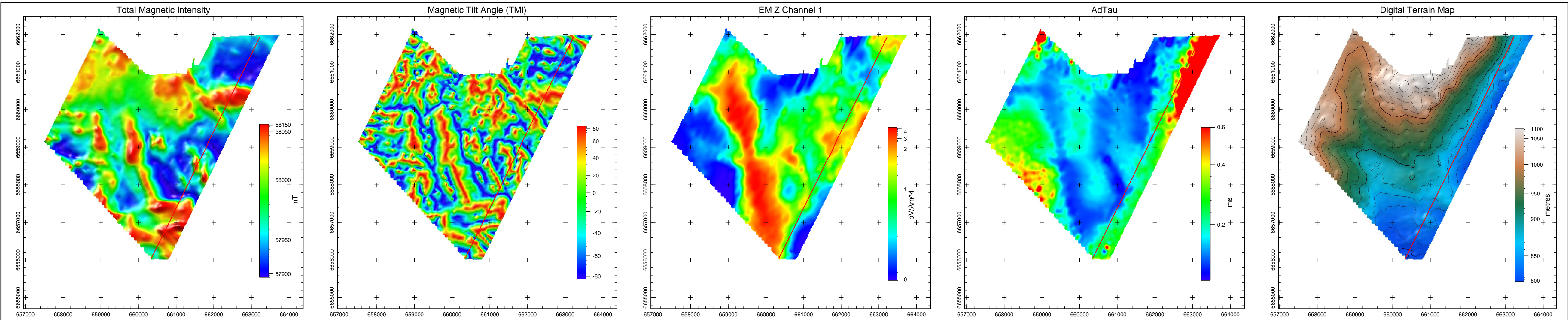
Tarsis Capital Corp  
MOR Extension  
Yukon  
VTEM 30 Hz Survey

Flown: May - August 2008  
Processed: January 2009



Condor Consulting Inc.  
Lakewood, Colorado





## Line L13390

NOTE:  
AdTau outcomes used in this MultiPlot were calculated  
from the Z dB/dt data using 0.002 pV/Am<sup>4</sup> as the cutoff.

EM Z Component	
Channel Times (µs)	
1	120
2	141
3	167
4	198
5	234
6	281
7	339
8	406
9	484
10	573
11	682
12	818
13	974
14	1151
15	1370
16	1641
17	1953
18	2307
19	2745
20	3286
21	3911
22	4620
23	5495
24	6578
25	7828



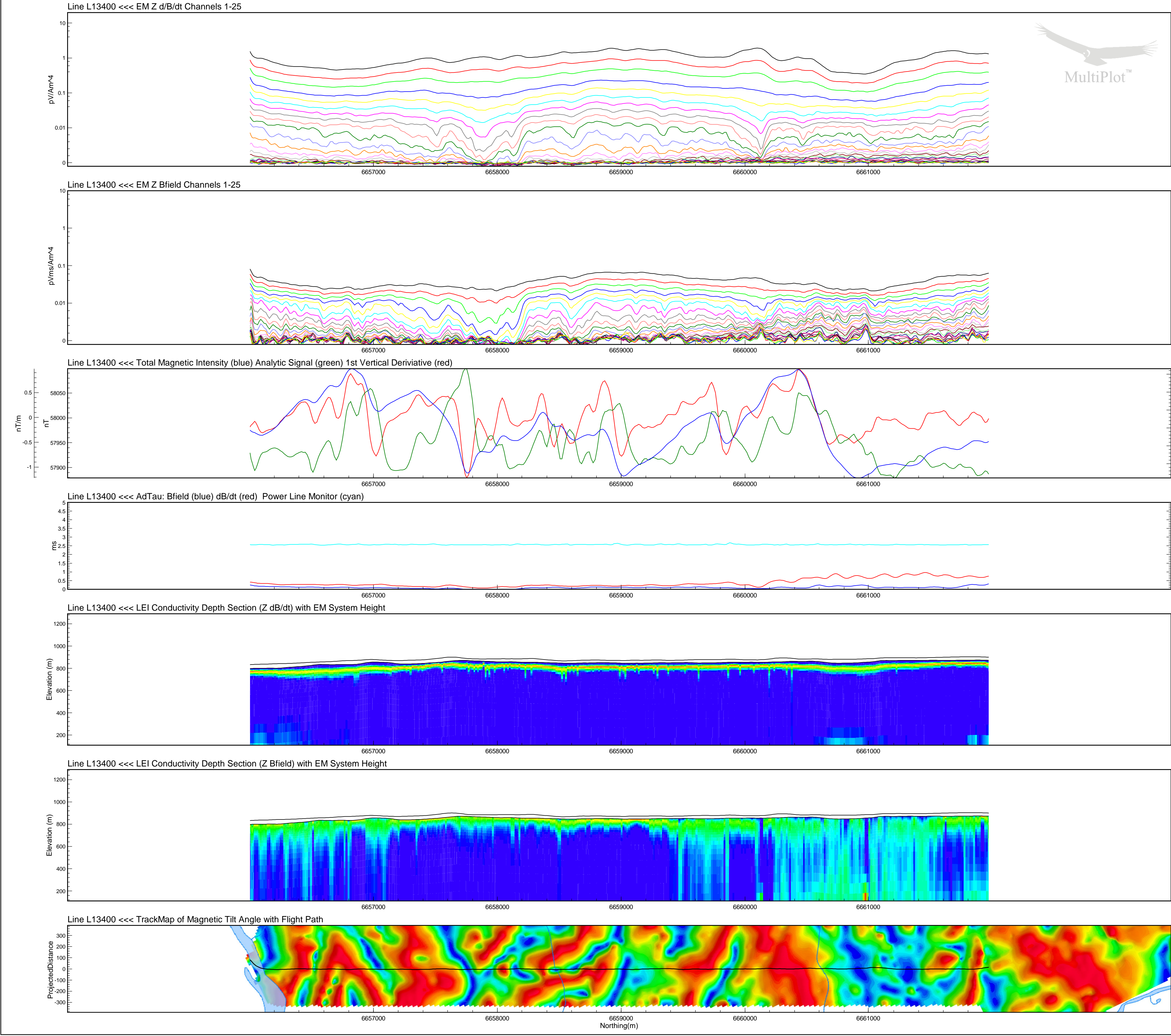
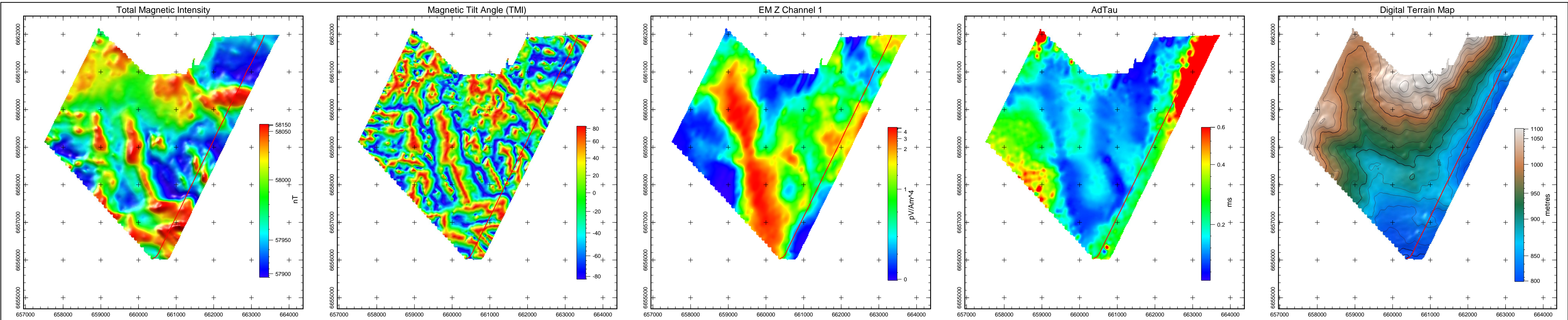
Tarsis Capital Corp  
MOR Extension  
Yukon  
VTEM 30 Hz Survey

Flown: May - August 2008  
Processed: January 2009



Condor Consulting Inc.  
Lakewood, Colorado

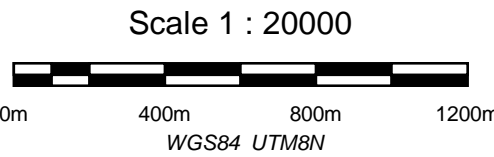




Line L13400

NOTE:  
AdTau outcomes used in this MultiPlot were calculated from the Z dB/dt data using 0.002 pV/Am<sup>4</sup> as the cutoff.

EM Z Component	
Channel	Times (µs)
1	120
2	141
3	167
4	198
5	234
6	281
7	339
8	406
9	484
10	573
11	682
12	818
13	974
14	1151
15	1370
16	1641
17	1953
18	2307
19	2745
20	3286
21	3911
22	4620
23	5495
24	6578
25	7828



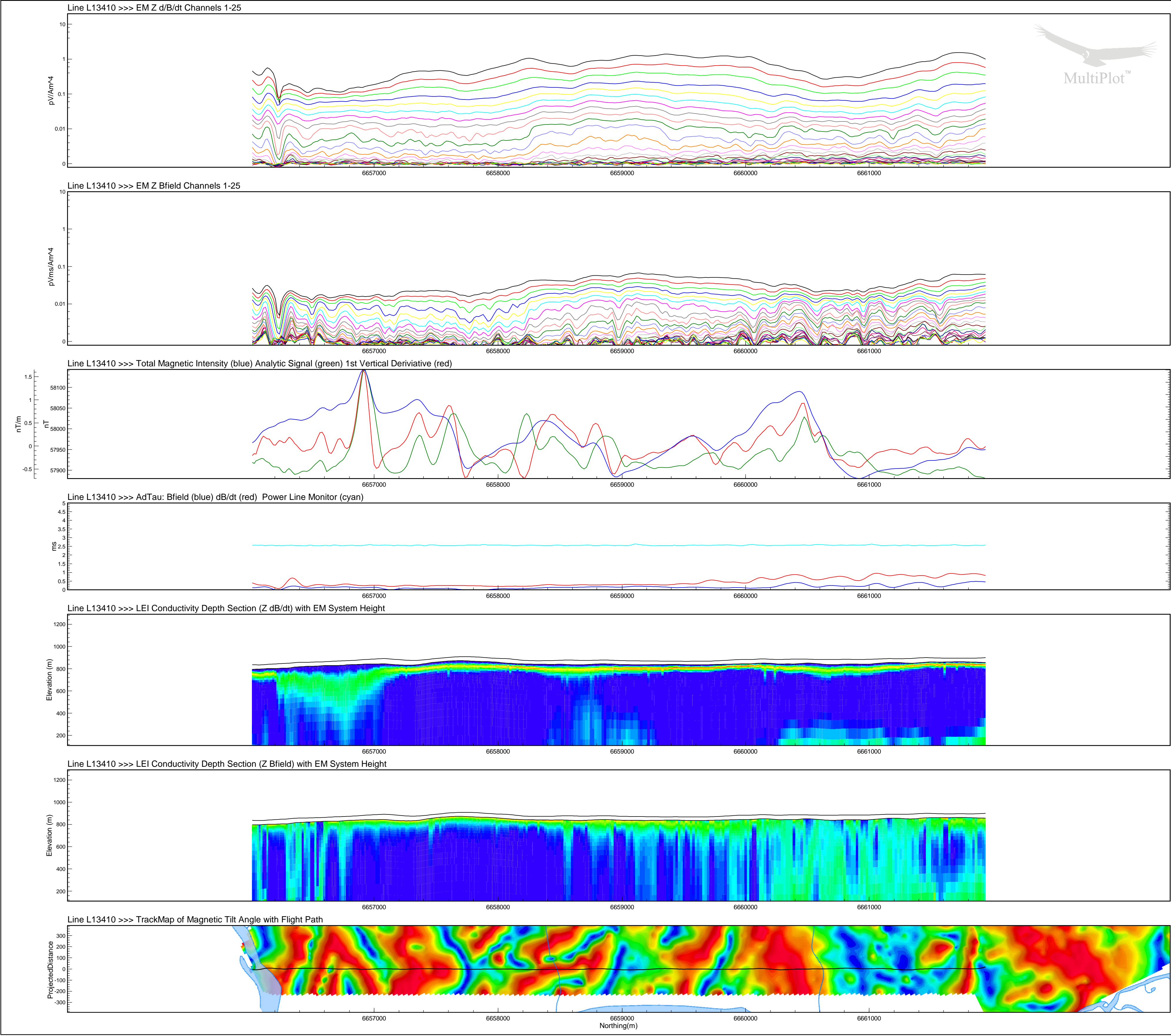
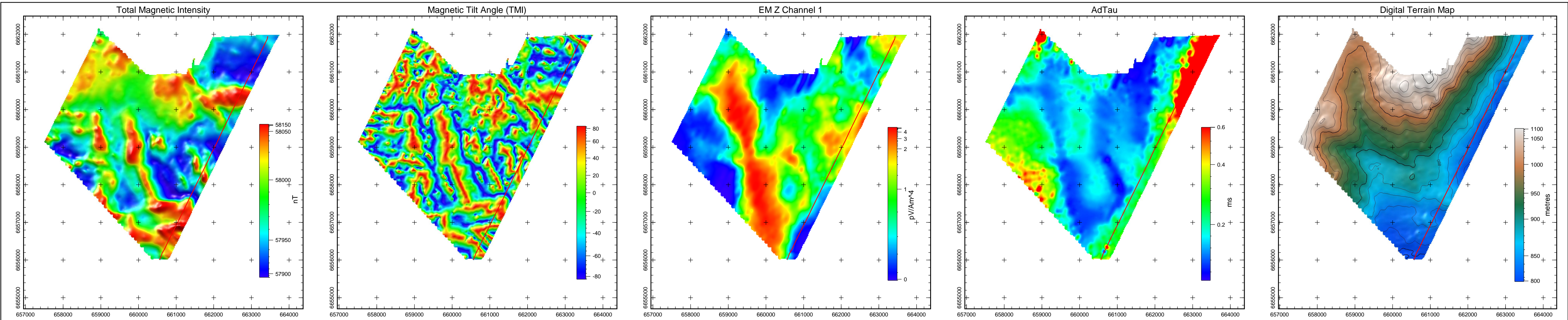
Tarsis Capital Corp  
MOR Extension  
Yukon  
VTEM 30 Hz Survey

Flown: May - August 2008  
Processed: January 2009



Condor Consulting Inc.  
Lakewood, Colorado





## Line L13410

NOTE:  
AdTau outcomes used in this MultiPlot were calculated from the Z dB/dt data using 0.002 pV/Am<sup>4</sup> as the cutoff.

EM Z Component	
Channel Times (µs)	
1	120
2	141
3	167
4	198
5	234
6	281
7	339
8	406
9	484
10	573
11	682
12	818
13	974
14	1151
15	1370
16	1641
17	1953
18	2307
19	2745
20	3286
21	3911
22	4620
23	5495
24	6578
25	7828



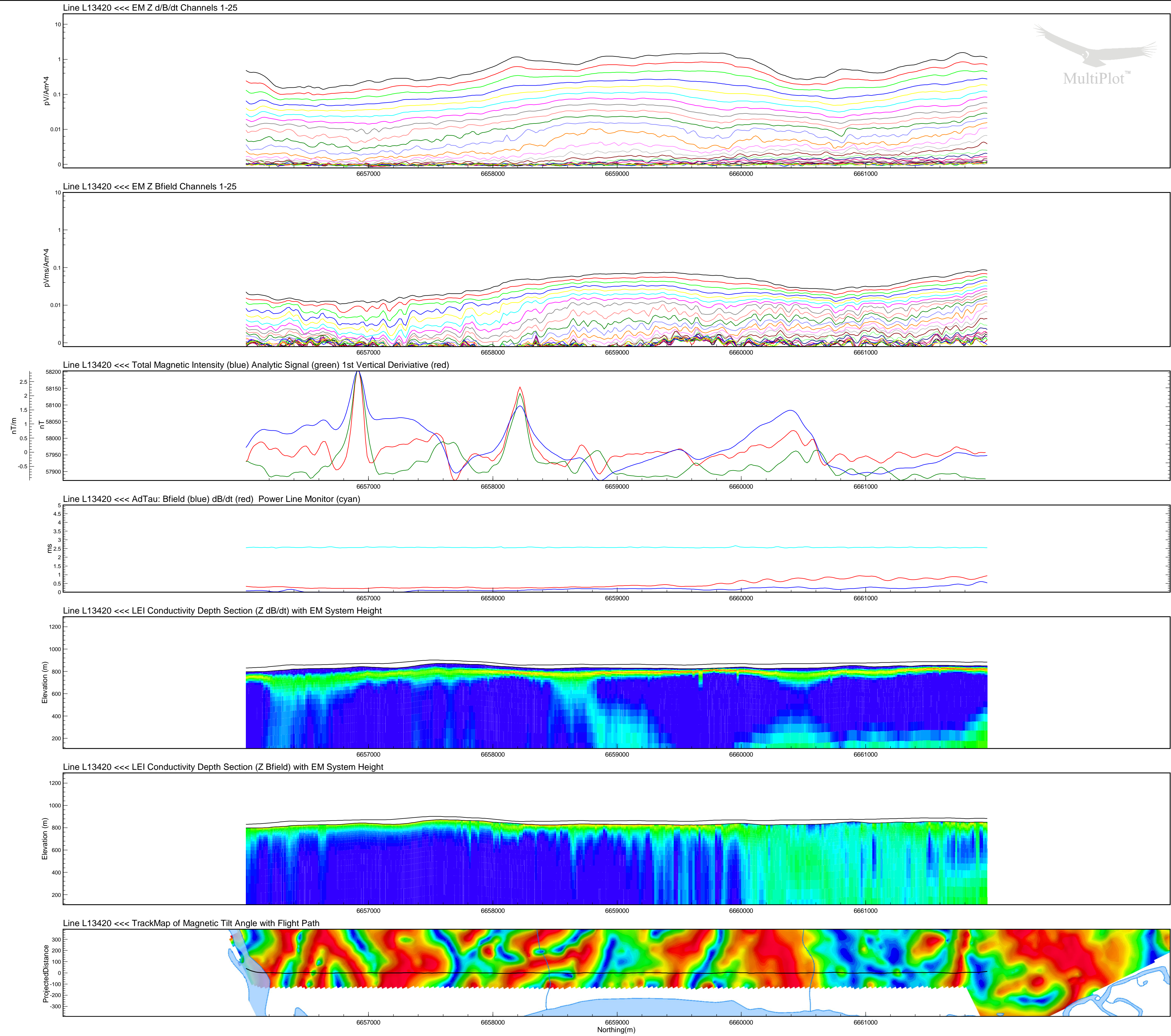
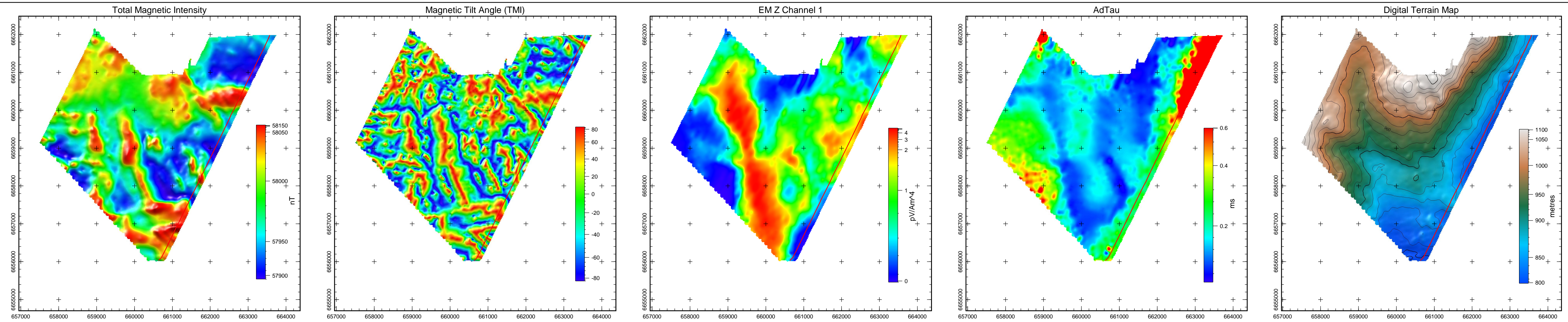
Tarsis Capital Corp  
MOR Extension  
Yukon  
VTEM 30 Hz Survey

Flown: May - August 2008  
Processed: January 2009



Condor Consulting Inc.  
Lakewood, Colorado





Line L13420

NOTE:  
AdTau outcomes used in this MultiPlot were calculated from the Z dB/dt data using 0.002 pV/Am<sup>4</sup> as the cutoff.

EM Z Component Channel Times (µs)	
1	120
2	141
3	167
4	198
5	234
6	281
7	339
8	406
9	484
10	573
11	682
12	818
13	974
14	1151
15	1370
16	1641
17	1953
18	2307
19	2745
20	3286
21	3911
22	4620
23	5495
24	6578
25	7828



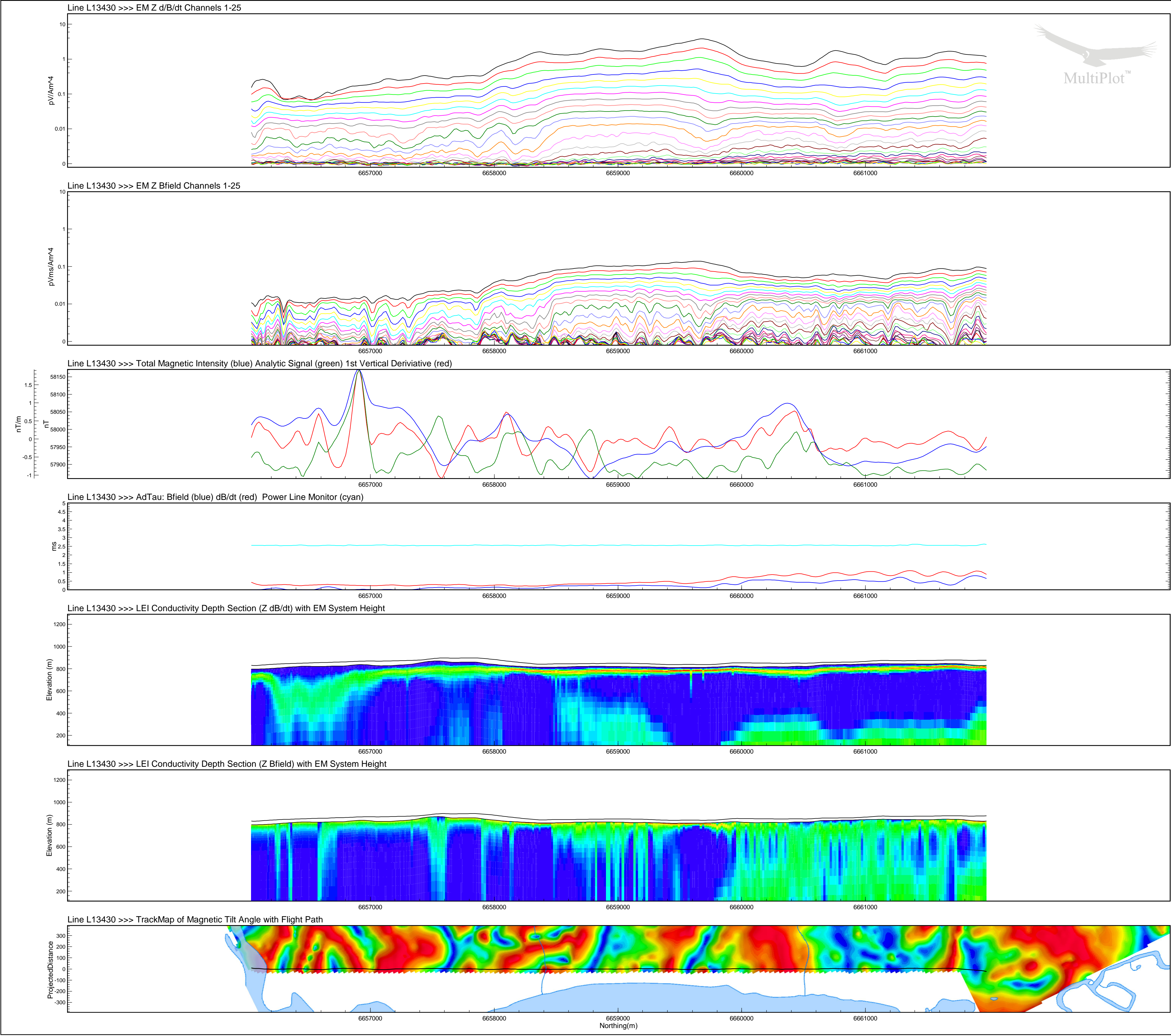
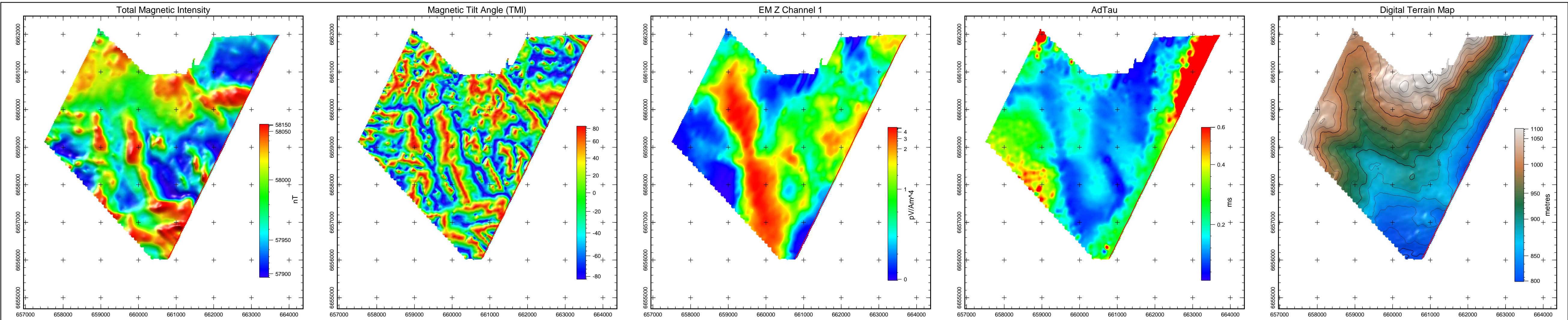
Tarsis Capital Corp  
MOR Extension  
Yukon  
VTEM 30 Hz Survey

Flown: May - August 2008  
Processed: January 2009



Condor Consulting Inc.  
Lakewood, Colorado





Line L13430

NOTE:  
AdTau outcomes used in this MultiPlot were calculated  
from the Z dB/dt data using 0.002 pV/Am<sup>4</sup> as the cutoff.

EM Z Component	
Channel	Times (µs)
1	120
2	141
3	167
4	198
5	234
6	281
7	339
8	406
9	484
10	573
11	682
12	818
13	974
14	1151
15	1370
16	1641
17	1953
18	2307
19	2745
20	3286
21	3911
22	4620
23	5495
24	6578
25	7828



Tarsis Capital Corp  
MOR Extension  
Yukon  
VTEM 30 Hz Survey

Flown: May - August 2008  
Processed: January 2009



Condor Consulting Inc.  
Lakewood, Colorado